

Attachment I

<p>Hearing From You Community Sessions Report</p>
--

**Report Title: City of Sydney 2050: Planning for our
Future Community Sessions – Hearing from you**

Client: City of Sydney

Version: Draft 1

Date: 18 April 2019



This material is made available by Cred Consulting on the understanding that users exercise their own skill and care with respect to its use. Any representation, statement, opinion or advice expressed or implied in this publication is made in good faith. Cred Consulting is not liable to any person or entity taking or not taking action in respect of any representation, statement, opinion or advice referred to in this document.

Table of contents

1.	Introduction	3
2.	Common themes	7
3.	Postcards	10
4.	Activity 1: Excited /Concerned	13
5.	Activity 2: Future City Services	21
6.	Activity 2 - future planning scenarios	Error! Bookmark not defined.
7.	MCA Young Ambassadors Workshop	34
8.	Neighbourhood Character Wall	37

1. Introduction

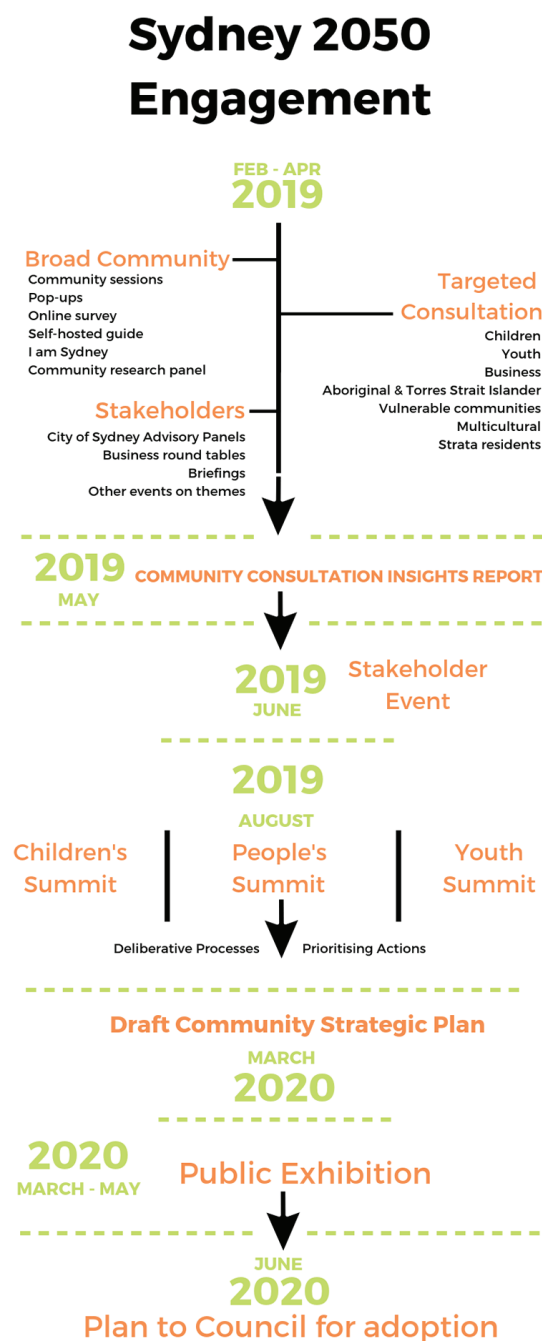
For more than a decade, The City of Sydney (the City) has worked with their communities to deliver a Green, Global and Connected city through Sydney 2030. This plan has been the cornerstone of the City's actions on climate change, support for local businesses, delivery of parks, playgrounds and cycleways, and support for the city's creative and cultural life.

The Integrated Planning and Reporting Guidelines for local government in NSW requires Community Strategic Plans (CSP) to have a minimum 10-year planning horizon and the City is commencing its review of its current CSP (Sustainable Sydney 2030).

At the heart of every CSP is the vision and aspirations of the community – the residents, workers and business owners. Sydney has experienced significant change over the past decade and to help develop its new community strategic plan – **Sustainable Sydney 2050** – the City is embarking on an extensive community consultation program in 2019 with everyone who lives, works and studies in or visits the city.

To inform this program, eight community sessions *"Planning our future: community sessions – hearing from you"* across Sydney's neighbourhoods were held between November 2018 and March 2019. A further two focus groups were held with strata residents and youth representatives. The sessions aimed to provide an opportunity to share thoughts about local areas, concerns and aspirations with the Lord Mayor and Councillors to inform future engagement for Sustainable Sydney 2050. The diagram opposite provides an overview of the City's 15-month engagement program.

This report provides a summary of outcomes from the 'community sessions' and targeted consultation with MCA Young Ambassadors Committee and strata residents only.



1.1. Purpose

The purpose of this report is to provide a summary of the key themes that emerged from the eight community sessions and two targeted focus groups delivered by City of Sydney's Engagement Team, Cred Consulting and People Place and Partnership (the Project Team).

The purpose of the community sessions was to:

- Hear from the Lord Mayor about the work of the City in their local area over the past 10 years;
- Provide an opportunity for local residents, workers, visitors and students to share their thoughts about their local area with the Lord Mayor and Councillors;
- Co-design the 2050 engagement program – understanding what questions the community think is important to explore further in 2019;
- Understand what is on the community's mind – what are they excited or concerned about when thinking about life in their local area in 2050;
- Understand what the priority services provided by the City of Sydney might be in the future;
- Help inform local strategic planning statements (LSPS), which the City is required to prepare by the NSW Government;
- Understand the local services the community values; and
- Understand what the community values about their neighbourhoods and what makes them unique now, as well as help us to identify the things that we might need to protect into the future, or how we want our future neighbourhoods to look and feel.

1.2. Community sessions' format

Times and locations

The Project Team delivered eight community sessions and two targeted focus groups between November 2019 and March 2019. The community sessions were open to anyone who lives, works, visits or studies in the City of Sydney Local Government Area (LGA). The Young People focus group was held with the MCA Young Ambassadors Committee. The Strata focus group was made up of members and attendees of the Strata 101 Program. **In total, over 370 people participated in one of the 10 sessions.**

Location	Date	No. of Attendees
Redfern Town Hall, 73 Pitt Street, Redfern	13 November 2018 6pm–7.30pm	40
Glebe Town Hall, 160 St Johns Road, Glebe	20 November 2018 6pm–7.30pm	74
Green Square Library, 355 Botany Road, Zetland	22 November 2018 6pm–7.30pm	26
East Sydney Community and Arts Centre, 34–40 Burton Street, Darlinghurst	29 November 2018 6.30pm–8pm	42
Ultimo Community Centre, 40 William Henry Street, Ultimo	12 February 2019 6pm–7.30pm	23
Erskineville Town Hall, 104 Erskineville Road, Erskineville	13 February 2019 6pm–7.30pm	46
Juanita Nielsen Centre, 31 Nicholson Street Woolloomooloo	19 March 2019 6pm–7.30pm	30
Sydney Town Hall, 483 George Street, Sydney CBD	26 March 2019 6pm–7.30pm	54
Museum of Contemporary Art, 140 George Street, The Rocks	27 March 2019 5pm – 6pm	15
Strata residents, 150 Pitt Street Sydney	5 March 2019 5pm – 6pm	20

Session activities

The following five engagement activities were delivered at each community session¹:

- **Postcards** – providing the opportunity to help co-designing the 2050 engagement program, participants were given a postcard to individually think about the one question they would ask the community to develop 2050 and how would we measure success. (individual activity)
- **Activity 1: Excited/Concerned** – thinking about the big picture and the big issues for the future of Sydney - the city and its communities - participants were asked: What are you most excited about and what are you most concerned about when thinking about Sydney 2050? (group activity)
- **Activity 2: Future services** – thinking about the range of Council services provided, participants were asked: What will be the priority services in Sydney 2050 and why they will be important to our future city? (group activity)
- **Activity 3: Future planning scenarios** – provided with a series of scenarios and how strategic planning might respond to some emerging and future city trends, participants were asked to rate whether the scenario fit or didn't fit into their ideal future Sydney. (group activity)
- **Neighbourhood character** – thinking about their local area and community, participants were asked: What qualities and aspects are unique and special about their local neighbourhood? (individual activity).

The common themes to emerge across all sessions and activities, as well as a detailed summary of the individual activities are provided in the following sections.

¹ Due to time constraints, the targeted focus groups completed some activities but not all of them.

2. Common themes

A number of common themes emerged across all sessions and activities.

Capacity to support a growing population

Future population growth and the impacts of this was a major topic of discussions across the sessions. Discussions focussed on how our future city will accommodate a growing population and for a lot of people, this was concern and others an accepted truth – but overall the way in which we respond to this growth, both in terms of the physical environment and as a community is a key priority. The community identified that we need to find ways to accommodate growth but not at the cost of our amenity, neighbourhood character, community cohesion, access to services or green space, while at the same time needing to reduce our environmental footprint and use technological advances to help us become more efficient.

Participants acknowledged that the City is already taking a big role in accommodating the population growth that is occurring and that this needs to be coordinated with neighbouring areas and other levels of government. While people felt the City is leading the way on how to plan for growth well, addressing the intervention of State government on local government planning as well as the provision of public transport to meet the increasing demands and action on climate change was concerning.

Addressing climate change and living more sustainably

Being more sustainable in how we live and taking action on climate change was another major topic of discussion across all sessions. The impacts of climate change remain a key concern for the city in 2050, with most people citing heat, increased rain and storm events and flooding as the aspects that will need to be proactively managed. There was strong support for the use of innovative and renewable energy systems, such as solar panels on rooftops and the harvesting and reuse of water.

How we manage waste in the future was a specific discussion about how we live more sustainably. Some felt that changing attitudes and behaviours towards waste and consumption will result in less need for resources, while others were concerned that the increased population will inevitably result in the creation of more waste. Many participants are keen to see more education programs and initiatives that encourage people to reduce their waste as well as the City initiating new technologies to manage waste and recycling more efficiently.

The importance of trees and green spaces as a way of reducing the impacts of heat remains constant with people. Participants also supported the concept of having 'public urban cool rooms' to provide relief in public spaces as temperatures increase.

A greener more liveable city

Green spaces, parks and trees were major topics of discussion across all of the sessions and activities to increase liveability, cool our streets, build social connections, and supporting biodiversity.

There was strong agreement that our future city must have even more green space than what we have now to meet the needs of our growing population. There was also agreement that the green spaces will have to work smarter and harder (ie. multipurpose and multifunctional) to respond to the needs of our diverse community (including children living in apartments). The productive use of our available spaces such as rooftop spaces for recreation and gardens, and urban farms for food production (but not at the expense of existing green spaces) was supported as well as additional green spaces on rooftops. A lush green city with parks, open spaces and trees was a future city that excited people and maintenance of these spaces was a top priority for the community.

Less cars and more active transport

Overall, session participants were supportive of a less cars focused city in the future. They were excited about technology advances such as driverless cars that may reduce the number of vehicles on the roads, about electric vehicles (and reduced reliance on petrol), and the opportunities that having car-lite and even car-free streets may create for community gathering, events and our streets becoming true extensions of our parks and public spaces.

The idea of the city having an efficient, integrated active transport network excited people about 2050, with the majority supporting a future scenario that involved transit oriented development. Participants recognised the importance of a functional transport system in the city and that the current problems are related to the failure to plan effectively for the growing demand. Participants noted the link between finding the right places for density in the city and having an effective and coordinated transport network.

Participants discussed the need for more attractive, safe and connected cycleways and walkways as our population densifies and our car dependence decreases (and ability to drive in a congested city) - ultimately supporting a paradigm shift to where active (and public) transport being the preferred method of travel around our city.

A diversity of housing types

Overall, there is support for a more and a diverse range of housing but not at the expense of quality, neighbourhood character, cultural diversity or affordability. At the same time, there was also discussion around some participants point of view that that maybe the city has its limits, especially in regard to university expansion and student housing. While participants acknowledged the reality that more people will be living in apartments, they also suggested that apartments needs to cater for a diversity of household types and sizes - not just students and single person households. The provision of community facilities, such as childcare and open space nearby was also a suggestion to ensure that quality apartment living is provided.

Retaining young people and maintaining the city's social diversity through housing choice and low cost, affordable housing had strong agreement from participants. While the majority of participants supported other ways of living (ie. co-living, vertical living and family apartment living), those that didn't support this were primarily concerned with the resulting quality and size and that this should be how affordability should be achieved. There was uncertainty and a mixed response to tiny houses being part of the mix of housing types. The support was in principle, but this was conditional; that it would come with guaranteed affordability and must be well-designed.

A socially connected, sharing city

A future community that is socially connected and embraces a way of living that is about sharing of spaces, resources and knowledge was an ideal that many were excited about and was important for the future city. People saw the high streets in the future as being more than just places of retail, but places for social interaction and building communities and wanted more places to connect in 2050.

People strongly supported shared communal spaces in apartment buildings and the need for 'noisy' activity spaces (ie. music lessons, children's play spaces, community gatherings). This need would not only help manage this common challenge of city living but provided new opportunities for social connection. People were also optimistic about the ability to balance the needs of residents with the need for the city and community to enjoy an active night life. While the use of technology and innovation was seen to enhance our future lives and be more efficient, there was also concern that this may impact on our ability as a community to connect face to face.

An equitable city

Overall, there is a strong desire for the future community to be equitable and inclusive. A place where diversity and difference are celebrated and that we don't lose the various types of people - young, old, families, creatives, migrants, traveller. The ways in which participants talked about creating a more equitable city was in terms of fairness and tolerance but also in the ability of people to access services, having varied housing options that are affordable, being able to access employment opportunities, and adequate, affordable creative and productive spaces contributing to a vibrant city.

3. Postcards

Upon arrival at the community sessions, all participants were given a post card and asked to respond, in writing, to the following two questions posed on either side:

- "If you could ask the community one question to help develop the new Sydney 2050 plan, what would it be?" and
- "How will we know if we have done a good job engaging our community in planning for Sydney 2050?"

The aim of these questions was to involve participants in designing the engagement program for Sydney 2050.

Question 1: If you could ask the community one question to help develop the new 2050 plan, what would it be?

Over 100 questions were collected across the community listening sessions. The questions ranged from big picture philosophical questions to small scale individual accountability.

The largest topic area related broadly to 'community' and included questions related to ways that we can retain neighbourhood character, sense of community, inclusiveness and ability to live a connected and healthy life. Other questions asked for solutions to emerging challenges such as the amount of population growth (and development), social isolation, community cohesion and housing affordability.

The second largest topic area was 'imagine your future city' with questions asking the reader to imagine what their idea city looks like in the future, or what type of city they would want their children and grandchildren to be able to live in.

The topic areas of environment and movement were also well represented. Environmental related questions referenced resilience, sustainability, climate change and recycling. A significant proportion of questions in the movement category challenged our current car ownership and use levels and indicated people's desire to test the appetite for more pedestrian and cycle priority and bigger investment in public transport infrastructure.

Some example questions were:

- "What can the city do to improve or develop an active community on your street?"
- "How can we retain close knit & friendly communities even as our population increases?"
- "What kind of city would you like to leave behind for your grand-children and their children?"
- "What strategy would/could be most successful to enforcing recycling?"
- "Should the City have a greater say on infrastructure projects?"
- "Where will the children and young adults play?"
- "What should Sydney offer to multi cultural multi age communities?"

- "What will future generations value in a city? How will their values be different from today's generation? And what will be the same?"
- "What can you contribute to improving our community"? Those with skills to share with others who don't have them?"
- "How can we continue to support the city "villages" while the city continues to grow and while we welcome new residents to communities?"
- "This is Redfern. How can there be some appropriate engagement with the aboriginal community? For example, if I want to learn an aboriginal language or about Aboriginal issues or culture, how can I do that?"
- "Should more streets be pedestrian only?"
- "How can Sydney be a world leader in biophilic design, diversity and resilience?"
- "How could the city address social isolation?"
- "How can the City improve infrastructure facilities to make it easier and safer to walk and cycles around the City and beyond?"
- "How will we stop Australian talent moving overseas for innovative work, and how will we attract the best talent from around the world?"

Question 2: How will we know if we have done a good job engaging our community in planning for Sydney 2050?

Questions identified a number of qualitative performance indicators that could be used to measure the success of community planning for Sydney 2050, including:

- Proactive, inclusive and detailed community engagement - with follow through on how input was used and implemented
- Ensuring that people engaged in the 2050 planning process are representative of the demographics of the residents
- High levels of participation, engagement and positive feedback
- Transparent decision making, including good communication and honest project updates, and
- A clean, well running city with happy citizens.

Some example responses were:

- "Diversity of community engagement matches diversity of community; age, cultural background, disability etc."
- "Our whole community will be able to afford to live in Sydney, including essential workers (medical, teachers, services etc)."
- "When the streets are clean, public transport runs smoothly, people felt safe and we are carbon neutral {or even carbon negative}."

- "When community members are asked, they will feed back that they have been consulted and heard (and that their voices have not been ignored for the sake of development.)"
- "Staying one step ahead of the community's needs, aiming to be proactive, rather than reactive."
- "A happy thriving community of citizens who want to and feel like they are able to give ideas and be listened to."
- "By being transparent with the ideas you gathered from the community and by demonstrating how you will respond to them and by being accountable to your policies."
- "Measure feedback and input. Keep up the discussion"
- "Summarise all findings in publicly available report/website & include them in next election key topics".

4. Activity 1: Excited /Concerned

In this group activity, each participant was handed one pink and one blue speech bubble and was asked to write down one thing they are excited about in thinking about Sydney in 2050 (**pink** bubble) and one thing they are concerned about (**blue** bubble).

4.1. What were people excited about for Sydney in 2050?

Across all sessions, over **450 comments** were received about what people were excited about for Sydney in 2050. After analysing these comments, the nine themes that emerged were:

- Having a quality integrated and active transport network (22%)
- Being a connected, generous and diverse community (14%)
- Being a vibrant, liveable and creative city (14%)
- Being more sustainable in how we live (11%)
- Provision of more and improved facilities, services and infrastructure (11%)
- Being a green city with open space, parks and trees (9%)
- Being a city with great architecture and local character (7%)
- Using innovation and technology to improve our lives (6%)
- Both community and government having the potential to change the future through new and improved approaches and advocacy (4%)
- Other (3%).

While the above nine themes were the most common collated across all sessions, there were some key differences between the individual session locations, which are outlined below.

Comparison of 'excited' themes at each workshop

The top 3 topics that people were most excited about in each workshop location have been highlighted in green in the table below (read horizontally). In all locations, with the exception of Ultimo, the number one thing that participants were most excited about was having a quality integrated and active transport network, followed by being a connected, generous and diverse community.

Table 1: Comparison of 'excited' themes

THEME	Having a quality integrated and active transport network		Being a connected, generous and diverse community		Being more sustainable in how we live		Being a vibrant, liveable and creative city		Being a green city with open space, parks and trees		Using innovation and technology to improve our lives		Being a city with great architecture and local character		More and improved facilities, services and infrastructure		New and improved approaches and advocacy		Other	
REDFERN	12	21%	12	21%	6	11%	3	5%	6	11%	6	11%	4	7%	5	9%	1	2%	1	2%
GLEBE	17	19%	13	14%	12	13%	12	13%	7	8%	6	7%	7	8%	7	8%	6	7%	4	4%
GREEN SQUARE	22	19%	19	17%	21	18%	15	13%	9	8%	8	7%	8	7%	9	8%	4	3%	0	0%
EAST SYD	19	23%	13	16%	10	12%	13	16%	9	11%	5	6%	5	6%	3	4%	3	4%	1	1%
ERSKINEVILLE	15	21%	11	15%	6	8%	12	17%	10	14%	1	1%	4	6%	7	10%	3	4%	3	4%
ULTIMO	2	9%	3	13%	4	17%	5	22%	1	4%	1	4%	0	0%	2	9%	2	9%	3	13%
WOOLLOOMOOLOO	24	29%	7	9%	5	6%	10	12%	5	6%	5	6%	2	2%	17	21%	3	4%	4	5%
CBD	28	24%	11	9%	7	6%	17	15%	10	9%	6	5%	15	13%	15	13%	5	4%	2	2%
STRATA	14	22%	7	11%	4	6%	9	14%	3	5%	5	8%	4	6%	13	20%	0	0%	5	8%
TOTAL	153		96		75		96		60		43		49		49		78		27	

In Redfern, a future community that is **connected, generous and inclusive** (21%) and having a **quality integrated and active transport network** (21%) were the things that people, by far, were most excited about. Under the theme of connected, generous and inclusive, people spoke about "A cohesive, integrated community" and "the diversity of characters in the social neighbourhood". People felt positive and excited about 2050 being "a fairer world" and "children will have a better fair opportunity" but also building a "a more generous city where people look out for each other". More parks, trees and green spaces (11%) and the use of technology and innovation (11%) were the other top things that people in Redfern were excited about when thinking about 2050.

Similar to Redfern, in Glebe, a future community that has a **quality integrated and active transport network** (19%) was the thing that people were most excited about in thinking about 2050. This included

comments like *"there is the opportunity for new ways of living in a closely connected world. **Being connected, generous and inclusive** (14%), **living more sustainably** (13%) and **being a vibrant, liveable city** (13%) were also things people were most excited about. Having a diversity of creative, cultural and night-time activities were also things that people at the Redfern community session were excited about. In the context of a more vibrant and connected community, other people commented about a *"return to local community - engagement, sociability, support, commerce"* and another about the idea of *"co-locating services, makerspaces and libraries engaging with residents on a 24hr basis"* and *"The revival of a vibrant nightlife with a range of diverse activities and precincts, and a great live music culture, Sydney at the heart of a nightlife, international city"*. When people spoke about a future transport system in Glebe, there was a notable move away from cars to active transport with comments like *"less cars more public transport"* and *"roads to cycleways"*. In the context of living more sustainably, a number of comments related generally to a *"cleaner greener city, less waste"* including improvements in green technologies such as solar power, other renewable energy sources, better stormwater, grey and rainwater re-use, reduced waste and improved recycling practices. Other things people were excited about when thinking about 2050 was the new fish markets, a growing diverse community, new open spaces and how technology can better connect us to our local communities and each other.*

In **Green Square**, a future **that has a high quality and integrated, active transport network** (19%) and **is more sustainable in how we live** (18%) was again the thing that most people were excited about. When people spoke about sustainability, it included everything from being excited about *"achieving 100% sustainable energy"*, the *"end of cars"* to *'massive use of rain and grey water to "greener, low energy use" to "food waste scheme" and "liveable/high density communities"*. **Being a connected, generous and diverse community** (17%) had a strong focus on diversity with comments like *"growing cultural diversity and creativity"*, *"people being different and still being valued"*, *"elimination of poverty and homelessness"* and *"more connected communities including more connection for people who are lonely"*. Specifically, a number of participants identified specific projects such as the new aquatic centre and the Alexandria Cultural Precinct as things that they were excited about when thinking about 2050.

In **East Sydney**, a **high quality and integrated, active transport network** (23%) was once again the thing that people were most excited about. A number of comments were about a car free city, a better public transport system, more active transport and walkable streets. Being a **connected, generous and diverse community** (16%) and **being a vibrant, liveable and creative city** (16%) were other things that a significant proportion of people were excited about. There was a strong focus diversity and culture with comments like *"growing acceptance, celebration and integration of diverse ethnicity, sexuality and other backgrounds"* and *"diversity brings opportunity, adoption of new ideas"*, *"diversity and inclusion, communal spaces in parks and beaches"* and *"potential to become a global cultural hub"*. **Living more sustainably** (12%) and **being a city with more parks, trees and green spaces** (11%) also ranked quite highly in the thing that people in East Sydney were most people were excited about. One person said it was the ideal of *"a lush green city that's walkable, rideable and safe"*, that was exciting, while another person was excited about *"seeing the families playing in the public spaces in safety at all hours"*.

In **Erskineville**, a future with **a high quality and integrated, active transport network** (21%) was the thing that people were most excited about. Specifically, people were excited about walkability, safer cycling and improved public transport. **Being a more vibrant, liveable and creative city** (17%) was the second thing people were excited about with comments like *"a better night time economy"*, *"better entertainment and nightlife mix"* and *"safe, secure nightlife in the city area"*. Other things that people in Erskineville were excited about included *"Council's desire to improve the built environment, its emphasis on better transport, better public spaces, better services"*, *"stronger communities"*, *"better waste management"*, *"a healthy city"* and *"more environmental awareness"*.

In **Ultimo**, unlike the other locations, being **a vibrant, liveable and creative city** (22%) was the thing that most people were excited about, referencing existing community places in the neighbourhood already like arts facilities, shopping, Chinatown and the Pyrmont-Ultimo community centre. **Living more sustainability** (17%) was also something that this community was excited about with some people commenting that they would like to see *"(a city with) zero emission, renewable energy and clean air"* and *improved "environmental cleanliness"*.

In **Woolloomooloo**, **a high quality and integrated, active transport network** (29%) was the thing people were most excited about in thinking about 2050. There was a range of comments ranging from local transport issues such as *"I can walk everywhere"* and *"transport convenience and choice"* to Sydney wide transport improvements such as looking forward to the second airport, no cars in the city and even Uber Air. Linked to this, the second thing that people in Woolloomooloo are most looking forward to is when the community is **provided with more and improved facilities, services and infrastructure** (21%). Within this topic, people spoke about local solutions for homelessness, more public housing, loneliness, as well as more "third places" and cleaner air/less pollution in the city. One person at this session was optimistic about 2050, commenting about the possibility that we can have *"a real sense of community in a city that's clean, beautiful and 100% sustainable"*.

In the **CBD**, the thing that most participants were excited about by far was **a high quality, integrated and active transport network** (24%). A high proportion of comments within this category related to a "car free city", "less cars" and driverless cars. A vibrant, liveable and creative city (15%) included comments around *"bustling vibrancy & diversity"*, *"access to culture"* and *"a far greater and vibrant night life"*. **Being a city with great architecture and local character** (13%) also excited some people. They referenced, our heritage, promotion of design excellence and guidelines for architecture. Some people noted they were excited about future projects such as the new Town Hall Square, Art Gallery of NSW extension, the light rail and improvements to train stations.

Discussions with the **MCA Young Ambassador Committee** revealed the thing they were most excited about was the use of **innovation and technology to improve our lives** (22%). A high proportion of comments within this category related to the positive impact that it could have on efficiency and how we live. Having access to technology, such as 3D printers and virtual reality was seen as being important. **Achieving their potential and personal growth** (22%), such as owning a house, having a family, building

a meaningful career, travelling and having stability in life were aspects of the future that also excited these young ambassadors as well as a **being connected, generous and inclusive community** (15%).

Targeted consultation with **Strata Residents** generated slightly different themes to the community sessions. Things that people were excited about included more green buildings, the NBS, stronger strata communities, electric vehicles and the light rail.

4.2. What were people concerned about in 2050?

A total of **350 comments** were received across the 8 community sessions, a focus group with the MCA Young Ambassadors committee and one strata resident focus group about what people were concerned about and the top nine themes to emerge were:

- Impacts of climate change (16%)
- Lack of effective transport options and congestion (14%)
- Population growth, overcrowding and density (14%)
- Access to and quality of facilities, services and infrastructure (14%)
- Social disconnection and the loss of community (11%)
- Transparent governance and decision making (9%)
- Loss of the local built character and heritage (7%)
- Lack of parks, trees, green and recreation spaces (4%)
- Anti-social behaviour and nuisance (3%)

Comparison of 'concerned' themes at each workshop

The top 3 topics that people were most excited about in each workshop location have been highlighted in green in the table below (read horizontally). While many of the sessions had similar top concerns, Glebe was an outlier because its top concern was about transparent governance and decision making. This topic didn't make it to the top 3 for any other location.

Table 2: Comparison of 'concerned' themes

	Impacts of climate change		Lack of effective transport options and congestion		Population growth, overcrowding and density		Social disconnection and the loss of community		Access to and quality facilities, services and infrastructure		Transparent governance and decision making		Loss of the local built character		Loss/lack of Green spaces and recreation spaces		Anti-Social behaviour (ranging from crime and drugs to noise and light pollution)		other	
REDFERN	13	20%	7	11%	12	19%	11	17%	7	11%	4	6%	3	5%	1	2%	5	8%	1	2%
GLEBE	13	14%	14	15%	9	10%	9	10%	13	14%	18	20%	10	11%	2	2%	3	3%	1	1%
GREEN SQUARE	18	19%	18	19%	14	15%	12	13%	9	10%	5	5%	7	8%	8	9%	0	0%	2	2%
EAST SYD	18	20%	16	18%	12	13%	8	9%	9	10%	5	6%	7	8%	6	7%	4	4%	4	4%
ERSKINEVILLE	15	14%	22	20%	18	17%	9	8%	19	18%	9	8%	5	5%	4	4%	3	3%	4	4%
ULTIMO	13	22%	9	15%	6	10%	3	5%	13	22%	8	13%	0	0%	2	3%	2	3%	4	7%
WOOLLOOMOOLOO	8	11%	10	14%	10	14%	9	13%	12	17%	8	11%	6	8%	1	1%	4	6%	3	4%
CBD	19	14%	10	7%	20	15%	13	10%	12	9%	13	10%	16	12%	5	4%	4	3%	22	16%
STRATA	3	8%	3	8%	2	5%	3	8%	12	30%	0	0%	1	3%	1	3%	0	0%	3	8%
TOTAL	120		109		103		77		106		70		55		30		25		44	

In **Redfern**, the issue of **impacts of climate change** (20%) was the most common concern of people when thinking about 2050 and whether there will be *“real and effective action ... and a clean environment”*.

Population growth, overcrowding and density (19%) was a close second when thinking about 2050. The **loss of community and social connection** (17%) was also something that many people at the session were concerned about, with one participant expressing a concern about *“Redfern losing its soul and identity as a result of gentrification – historically for Indigenous Australians in urban areas – how do we address this?”*.

In **Glebe**, one-fifth of responses identified **transparent governance and decision making** (20%) as a concern when thinking about 2050. There was a strong commentary about state government intervention in local planning and decisions with specific reference to the Bay Precinct and fish market redevelopment as well as loss of social housing and development of tall buildings. These comments were also linked to the loss of local built character. This was followed by **the lack of effective transport options** (15%) and the **impacts of climate change** (14%).

In **Green Square**, like people in Redfern, the issue of **climate change** (20%), **lack of public transport and congestion** (19%) were the top issues that concerned people. The third issue that most concerned people when thinking about 2050 was **population growth, overcrowding and density** (15%) with participants identifying their concern about overcrowding was specifically about *“feeling like you can never be alone or have calm”* and *“overcrowding [is] not a new issue, [it is] felt most acutely on transport wedging yourself. Green Square is still being built, the proportion of people coming does not reflect that it is still more to come”*.

In **East Sydney**, the impact of **climate change** (18%) was once again the top issue that concerned people with one participant stating that *“we won’t get to the Sydney we want in 2050 if we don’t act now”*. Lack of public transport and congestion (18%) and population growth, overcrowding and density (13%) were the other issues of concern to most people in East Sydney. Examples of specific concerns include comments like the *“loss of [a] diverse demographic – young, old, families, migrants and travellers – turning the city into a different place”* and *“infrastructure won’t be able to sustain the amount of people living in the inner city (ie. Schools, housing, roads)”*.

In **Erskineville**, the **lack of public transport and congestion** (20%), **access to and quality facilities, services and infrastructure** (18%), and **population growth, overcrowding and density** (17%) were the top things concerning participants when thinking about Sydney 2050. In the context of transport and population growth, people are concerned about pollution and noise from cars and the ability for critical infrastructure to be able to keep up with growth. People also had concerns around high rise buildings, housing affordability and overdevelopment. There were also a number of comments with concern for homeless and vulnerable people in the community. One participant said *“I’m concerned about the very high, generally unaffordable house prices which create homogeneity in the community (of rich people)”*.

In **Ultimo**, there was a high level of concern around the **impacts of climate change** (22%) and **access to and quality facilities, services and infrastructure** (22%) with particular reference to housing affordability, lack of support services, corruption and development.

In **Woolloomooloo**, **access to and quality facilities, services and infrastructure** (17%), was the biggest concern to participants when thinking about Sydney 2050. This included things like public schools, child care centres, transport, homelessness and mental health services, and having enough social/adorable

housing to support the population. **Population growth, overcrowding and density** (14%) was also a concern for many people, particularly in relation to *“overpopulation”, “overdevelopment” and “damage that could come from governments focused on disconnected development and greed”*. Other concerns for this community related to the loss of community, lessening vibrancy, loss of sense of place and heritage buildings included: *“Conservative laws hindering the nightlife and therefore tourism in Sydney”, “Loss of the cross culture as a harm to people who don't fit the norm”, “Too many people are priced out of inner Sydney and you lose that character” and “Dwindling night life and over governing”*.

In the **CBD**, participants had a wide range of concerns (‘other’ – 16%), from income inequality, to innovation, to corporations with too much power. Housing affordability, population growth pressures on infrastructure and mental health/wellbeing of people were some key concerns connected to **population growth, overcrowding and density** (15%) and the **impacts of climate change** (14%). Other concerns were around the **loss of heritage and identity**, corruption, and social isolation. Other specific concerns included “not enough decision makers that don't have a vested interest”, “police brutality”, “mental health in dense places” and “noise pollution”.

The **MCA Young Ambassador Committee** were particularly concerned with the **impacts of climate change** (44%) and damage to the natural environment by pollution and other activities. Other concerns were around the **increasing cost of housing and living** (30%), **lack of parks, trees, green and recreation spaces** (15%). Other specific concerns included a range of transport issues such as pollution, congestion and the lack of affordable transport, the overpolicing and regulations imposed by government, state of the economy and future job prospects, liveability and increasing urban density and corporatisation of the urban environment (ie. Barangaroo).

Like many of the community sessions, the **Strata resident** focus groups’ biggest concern was around **access to facilities, services and infrastructure** (30%). This included concerns around **lack of affordable housing, short term rentals/Air Bnb** and an increase in **homelessness**. The group was also concerned about the quality of buildings being constructed, scale of development and Strata policies.

5. Activity 2: Future City Services

Participants were presented with fact sheets of 14 Council services that the City currently provides. Participants were asked to briefly read the fact sheets and consider what will be the priority services in Sydney 2050. Each participant was given three sticky notes to vote for the services that they think will be the most important for a future city, and the group discussed why.

A total of **855 votes were recorded**. The table below provides a ranked list of services from most to least number of votes.

Table 3: City Services – Priority Ranking Summary

MOST IMPORTANT CITY SERVICE IN THE FUTURE	NUMBER OF VOTES*
Park and green space maintenance	150
Residential waste collection and recycling	141
Tree management – park and street trees	89
Footpath and cycleway maintenance	82
Street cleansing and street bins	72
Public safety and local emergency planning	58
Stormwater maintenance	56
Playground and sports field maintenance	45
Aquatic centres	38
Road maintenance	30
Street lighting and street furniture	26
Graffiti removal and illegal dumping	26
Rangers	22
Venue management	20

*Each participant was given 3 'dots' to vote with, however some people chose not to vote.

5.1. Summary of discussion by service type

#1 - Importance of quality open space and green space as the city population grows and intensifies.

Green and open space maintenance was the top priority service for participants across all sessions. Residents identified the importance of open green spaces for living a healthy city life, and the need to protect what we already have as well as increase the amount parks and tree canopy cover. It was also important for people that the green and open spaces are multi-functional and fit for purpose, as well as working smarter and harder to respond to increased population, the continued need for clean air, the increasing need for our green spaces to combat the urban heat island effect, increasing apartment living and reliance on parks as our backyards, communal and meeting spaces

A number groups talked about the qualities and types of spaces that our future city will need. This included a plan for children growing up in high density urban environments; creation of 'wild' and natural areas - as places to connect with nature and where children can use their imagination; more urban farms and rooftop gardens; opportunities to share our backyards and transforming them into social places; changing how we use streets to become extensions of our parks and green spaces; green spaces to become places for social connection and where the community can come together. People also spoke about the importance of maintaining biodiversity in the city and the importance of green spaces to our mental health, quiet spaces and wellbeing. Parks and open spaces were also seen as important spaces for social connection and celebration.

Some residents also talked about the need to derive better outcomes from new development - ensuring that masterplans create useful communal space that is functional, welcoming and useable - not just left-over space from building separation regulation (Central Park was cited as a good example of a successful green space in a high density environment). Some suggestions for future improvement included; management of dogs off leashes, dog owners not picking up after their pets, smoking and cigarette butts, improved maintenance of parks (in Glebe this was a particular issue) and increased water sensitive urban design projects.

2 - Evolution of residential waste services

Residential waste was a popular discussion topic at all sessions. Some groups argued that we will have a reduced need for residential waste services because consumption and recycling behaviours will have changed for the better by 2050, while others argued that an increased population will create more waste and will require more resources. E-waste was also flagged as a growing issue in the future city and the need for better e-waste recycling programs.

Some residents congratulated the City on the new food waste initiatives but are keen to see more education programs, incentives and even penalties around waste reduction and correctly recycling to reinforce individual responsibility and accountability and bring around wide spread behavioural change. They would also like to see the City thinking about the use of technology like real time/sensor/automated waste collection services, or automated bins to improve efficiencies in waste management.

#3 – Importance of trees

Participants across all sessions identified tree management - street trees, park trees, playground trees, all trees - as an important priority for our future city. Participants widely agreed that trees have always been important, and they will become increasingly important as we start to experience more of the effects of climate with more possible extreme heat events and increased instances of the urban heat island effect due to our continual development. Participants also spoke about the importance of trees for canopy cover, reduction of the urban heat island effect and the ability to support biodiversity. Despite their resilience and huge canopies, a few participants highlighted that they struggle with the Plane Tree species for allergies or mess. Others highlighted the need for 'right tree, right place' and improved tree management.

#4 – Importance of walking and cycling to our future city

Across all sessions, footpath and cycleways were seen as important parts of our future city, especially as our population grows and more people choose to cycle and walk as their preferred ways to get around the city, rather than cars. Participants also noted the need to consider ways to better prepare our city for electric bikes and bike share. They noted the importance of having quality, connected, protected, even, pleasant, safe pathways and separated cycle ways. The health benefits of walking and cycling were also important to many of the participants, however many noted that while they would like to cycle, they currently do not due to safety concerns.

Some people expressed frustration at cyclists using pedestrian paths (e.g. along the foreshore), but generally supported the idea of more dedicated cycle lanes as a way to mitigate this conflict. Glebe residents in particular, highlighted the importance of having safe and connected cycleways but noted that they don't have a direct connection into the city or into a wider network of cycle paths at present.

#5 – Street cleansing and street bins

While most participants valued a clean city, some residents had opposing views whether street bins would be needed in our future city. Some argued that we should have less bins due to a change in packaging and behaviours (e.g. keep cups), while others think we will need to have more due to an increased population (e.g. on King Street). Some also called for a reward/punishment system for littering to actively encourage a change in behaviour. A number of participants commented that improvement to the standard to cleanliness in heavily used spots in our city such as Kings Cross and the CBD on weekends for health, hygiene and tourism reasons was needed. Other participants noted that if we want more people walking places, then we need to make our streets clean, welcoming and attractive for them.

#6 – Public safety and local emergency planning

Some participants want to see public safety and emergency planning prioritised and strengthened to ensure that everyone feels safe and comfortable living, working and visiting here. Some wanted improved street lighting for safety, while others would like to see more CCTV around the city.

Some of the residents perceived that there would be an increased risk associated with an increased population, bigger events, and more places of public congregation. Others mentioned the need for the

city to increase its resilience to extreme climate events. Some participants in Redfern mentioned a few places where they currently feel unsafe, despite some recent improvements: Bourke Street, some areas of Redfern, and some areas of Waterloo.

Residents in the strata workshops suggested that as the city becomes more multicultural, more information signage in different languages, touch screens in other languages may be needed.

#7 – Stormwater maintenance

The key message relating to the future maintenance and management of storm water was the need to manage, harvest, reuse, and treat our storm water will be critical. This was linked to global warming, and the threat of increased rain or extreme rain events and increased hard surfaces. Many participants would like to see how the city can better use storm water for watering our public parks and gardens.

#8 – Playground and sports field maintenance

Similar to green space and parks, participants noted the importance of our playgrounds and sports fields for all ages as our population living in apartments increases alongside an urbanising environment. It was noted that the playgrounds are good but the sports fields in the city are a problem with some people commenting that we need more as currently they are being overused and are full. Some participants also wanted to see a variety of uses that responds to who the community is and what they need, but specifically sport fields and playgrounds being important to young people.

#9 – Aquatic centres

Residents noted the importance of pools to urban life, especially as demand and use of existing pools and beaches increases in nexus with our population. The ability to swim recognised as “one of the best health-giving sports”. Some Glebe residents pitched the idea for ocean baths on Blackwattle Bay, while some Green Square residents said they want pools because they don’t want to go to the beach.

#10 – Road maintenance

The maintenance of roads was seen as important to our future city in order to ensure the safety of cyclists and pedestrians who may still use roadways, as well as for drivers, and particularly for driverless cars.

#11 – Street lighting and street furniture

Street lighting and furniture was seen by residents as an important part of a future city for the same reasons that it is important in our city today: safety at night (and some emphasised especially for old people in terms of the need for street lighting and the need to take breaks between walking blocks).

#12 – Graffiti and Illegal dumping

Graffiti and Illegal dumping, along with street lighting and street furniture was the lowest overall priority for our future city. Of the participants who commented on this future service – they said they would like to see more anti-graffiti materials used in the future and that the city’s illegal dumping situation is improved. Some residents note that while artistic graffiti can be engaging, illegal tagging is not.

#13- Rangers

Redfern and Glebe session participants identified rangers as still being an important part of our future city services. However, there was a mixed opinion on whether the ranger function should be automated or remain as a job completed by humans. Arguments for robot rangers were based on technology's ability to increase efficiency and response times, while arguments for human rangers were on the basis that we will still need human interaction, a sense of safety, to ensure laws are enforced and empathy from our city rangers into the future (i.e. you can't reason or negotiate with a robot). One participant saw the role of rangers as becoming more about being social connectors / community liaison.

#14 – Venue management

Venue management was seen as important (as well as all the services) but was the lowest overall priority for our future city based on the number of votes. Participants who identified venue management as a key priority for our future city spoke about the importance of the city retaining its current venues, improve the ease of hiring them, ensure they are responsive to changing community needs, and managed well. Some residents spoke about the importance of venues in high density areas – where people rely on places outside of the home to come together as a community and socialise.

5.2. Comparison of votes at each workshop

The top 2 or 3 most voted for topics in each workshop location have been highlighted in green in the table below. Park and green space maintenance received the most votes at Redfern, Green Square and East Sydney. Residential waste collection and recycling received the most votes at Glebe, the CBD and Ultimo.

Table 4: City Services Session Comparison Table

	Glebe	Redfern	Green Square	East Sydney	CBD	Erskineville	Ultimo	Woolloomooloo	Total	%
Park and green space maintenance	32	18	21	30	13	8	7	21	150	18%
Residential waste collection and recycling	43	17	9	19	14	9	10	20	141	16%
Tree management – park and street trees	18	17	16	14	8	4	5	7	89	10%
Footpath and cycleway maintenance	19	16	10	10	5	11	3	8	82	10%
Street cleansing and street bins	14	4	7	6	7	2	7	25	72	8%
Public safety and local emergency planning	12	9	5	6	8	5	3	10	58	7%
Stormwater maintenance	9	9	11	6	7	4	5	5	56	7%
Playground and sports field maintenance	14	3	7	11	4	1	5	0	45	5%
Aquatic centres	17	2	5	4	5	1	3	1	38	4%
Road maintenance	16	3	3	3	1	0	3	1	30	4%
Street lighting and street furniture	5	2	3	1	3	2	3	7	26	3%
Graffiti removal and illegal dumping	5	3	2	1	2	2	1	10	26	3%
Rangers	14	7	0	1	0	0	0	0	22	3%
Venue management	5	2	0	5	4	2	1	1	20	2%
TOTAL	223	112	99	117	81	51	56	116	855	100 %

6. Activity 2 - future planning scenarios

The purpose of this activity was to create a discussion, and to seek support or otherwise, around possible future planning scenarios to inform the City's local strategic planning. Each participant could choose one card from a deck, read it to the group, and pose a question. The group was asked to vote whether **"yes absolutely"** they support the scenario happening in the City in the future, **"no way"** they don't support it, or **"not sure"** that's not happening here.

6.1. Emerging themes

Table 1 shows the votes for each of the future planning scenarios across all community sessions.

Scenarios that were supported:

- **A reduction in cars in our neighbourhoods** with 88% supporting future "car-lite" neighbourhoods (where there are no cars) and less cars on the streets in general. Participants also supported electric vehicle charging facilities in public space (80%). Following from this was a desire for more open streets where roads and lanes are closed to traffic and opened to pedestrians, events, and community activities. This was supported by 94% of participants.

Although there all neighbourhoods expressed desires for 'open streets', there was unanimous agreement in Redfern, Green square, while Ultimo and Woolloomooloo unanimously agreed with the future scenario of 'car-lite' suburbs.

- **Sharing spaces in buildings and on rooftops.** There was strong support for parks and recreation facilities on rooftops (86%), more rooftop urban farming (75%), shared communal spaces in apartment buildings (88%), and vertical schools with shared facilities (92%).
 - The neighbourhoods that shared the most excitement for rooftop urban farms were Glebe, East Sydney and Erskinvile, and while broadly supported, the CBD was the only neighbourhood that unanimously supported 'recreation in the sky'. The group that shared the most concerns around rooftop recreation and farming was the strata committee with comments from the included that they would 'rather have clothes lines' or solar panels, and a broad concern that these innovations would increase strata costs.
 - While utilising these otherwise empty spaces were supported, there was discussion that rooftop and shared facilities should not be in place of sufficient and quality public parks and facilities at ground level. Some participants were also concerned about how public facilities on rooftops

could be accessed, funded or managed and ensuring that future schools deliver increased community benefit and how strata fees would be impacted.

- Shared communal spaces in apartment buildings was supported by workshop participants across all of the sessions. People could see the need and opportunity for these spaces to cater to noisy activities such as music lessons, children’s activities, as well as bigger spaces for shared entertaining, socialising and social connection opportunities. Some people highlighted the need for these spaces to effectively manage noise (e.g. through soundproofing) and balance sound and use to be effective.
- There was less support for shared backyards (73%) with some participants concerned that this wouldn’t be safe, that it would be hard to manage and that while open to the idea of sharing still valued some degree of privacy. But others commenting that this already happens in Europe. Despite the concerns, this scenario was most popular in the CBD, followed by Green Square, potentially indicating that the highest density areas within the City are open to sharing new and innovate ways to access open space.
- Participants also frequently stated that they would also like to see solar panels on all new building rooftops, with some neighbourhoods offering this as an alternative option to urban farming.
- The MCA Young Ambassadors like the efficient use of shared communal space as it brings communities together, allows people to share their resources and it is better for the environment. They also liked urban farms on rooftops because the greenery helps to absorb pollution, cool buildings and beautify the city. It also provides opportunities for local food production within the city and gives people access to green space in an otherwise wasted spaced.
- **More diverse housing options for a range of households.** Participants agreed that the City has a definite role in managing a diverse housing supply. They were keen for the City to have a variety of different housing choices for the future, that housing is affordable for people and we need to look at a range of options on housing. 77% of participants supported co-living housing, 81% supported vertical living for seniors, and 86% supported apartments that were designed for children and families, including mandatory play spaces. However, only 67% supported tiny houses.
 - Participants expressed a desire to ensure that there is a range of housing types, designs, and affordability to enable a diverse mix of people to continue to live here. Those that didn’t support scenarios such as co-living and tiny houses, generally were concerned that housing quality and size shouldn’t need to be reduced to make it affordable for people to remain living here. Participants were also concerned that while housing is being built under the “affordable housing” schemes, it often is still unaffordable.
 - Co-living was broadly supported across the City, however the neighbourhoods that strongly supported the idea were Erskineville, Glebe and Ultimo. In these neighbourhoods there was discussion that co-living was a great intergenerational opportunity, breaking down social isolation and improving access to services, places of study and of work. Other neighbourhoods

discussed how the market will deliver this form of housing if people show demand for it. Other concerns included the need for strong regulation around number of beds allowed per room to avoid issues of overcrowding and compounding disadvantage.

- Tiny houses attracted a mixed response from participants. Of the people who supported tiny houses in principle – their support was conditional: that there would still be an appropriate mix of housing types and sizes, that they could only work in certain areas (this was predominately discussed at Woolloomooloo), that they would need to guarantee affordability, and they must be designed well. Reasons why people weren't supportive of this idea includes; believing that units are a more realistic dwelling type for City of Sydney (a dense and land scarce LGA), that tiny houses are the equivalent of modern trailer parks.
- Discussion around this planning scenario also focussed on the reality of more people (and families) living in apartments in the future, similar to many global European and Asian cities. In anticipation of apartment living becoming the norm – participants suggested establishing a minimum apartment size for families, and a diversity of housing that caters to a mixture of people and ages – not just students or single person households. There were also suggestions for child care to be provided within the building over a certain size and for these apartments to be near open space and parks.
- There was some concern about the idea of vertical living for seniors, not only for safety reasons and limited mobility in case of fire etc. but also because it's important that older people get to connect and be a part of the broader community rather than living in age-based silos.
- The MCA Young Ambassadors like co-living housing because it can bring people together, combat social isolation. and increase happiness. It can alleviate pressure on busy people and families by distributing responsibilities for cooking, childcare etc. Committee members think this could also work well for retirement villages.
- **A reduction in waste and addressing increasing heat.** Participants were aware of global warming and a need to change behaviours to mitigate and adapt to environmental changes, however there were diverse responses in the best ways to go about change.
 - 61% of participants supported the City employing strategies to reduce household waste creation (18% didn't support and 21% of people were unsure), including charging for waste in the future. However, participants felt that residents and businesses would need help to make this happen, and there would also need to be change at the supplier level (e.g. reduced packaging). Green square unanimously supported the idea of charging for waste, followed by strong responses in the CBD, Woolloomooloo and Strata Committee. People felt that just as they pay for water and electricity based on usage, those with smaller waste should not have to subsidise households with large amounts of waste. Ultimo unanimously disagreed with the idea of having to pay for waste. They felt that although waste is a problem for cities and that we are already paying for the environmental costs of landfill, there should be a different approach such as turning waste into energy, with a shared concern that charging for waste was an equality issue between those who could afford to pay and those who could not.

- Participants also supported concepts such as “public urban cool rooms” (84%) to provide public relief from the heat as our temperatures increase. Some people felt that the energy costs of running these would be counter intuitive and that there should also be stronger responses to climate change at the macro level so cool rooms are not needed. There was unanimous support in Ultimo for these cool respites followed by Glebe and Erskineville, with suggestions such as increased parks with water play.
- **Improved transport and transport-oriented development.** 65% of all participants supported transport-oriented development with 22% disagreeing and 13% were unsure. No neighbourhoods either unanimously agreed or disagreed with the scenario indicating that residents of the city are already highly engaged on issues relating to housing, and understanding the complexities and implications of high density living.
 - There was discussion around transit-oriented development, and if a new metro came through part of the city, the density that that would bring. There was strong recognition that transport is a very important part of our city and that the problem has been the failure to plan for it effectively. It was clear that we need to find the right places for density in the city.
 - Other comments from Erskineville included that transport-oriented development was an old-fashioned approach to planning and housing, and that instead of more housing being contingent on having more public transport options, more public transport should just be provided.
 - In the CBD neighbourhood specific concerns around the redevelopment of Waterloo was raised and that although investing in transport near housing is a good approach, there need to be the right motivations behind significant increases in density.
 - The MCA Young Ambassadors don’t see cars playing a dominant role in urban environments into the future, they think cars will continue to be a necessary and convenient option for some including families. However, the majority of committee members would like to see more use of public transport in the future.
- **Public place to connect: high street activation and libraries:** This was demonstrated through very strong support to retain our high streets to stay as place for social connection in our future city (96% supported), and less support for new types of public facilities such as bookless libraries (31% supported). Discussion included:
 - Do we need local business centres and high streets? Will high streets still place an important role in community life in the future? 96% of participants who responded to this scenario (85 people) said they agreed that our high streets should remain an important part of life in the future. They reflected on some reasons why high streets are currently suffering; parking demand, high rents, planning framework (e.g. the DA process), competition from big box shopping centres and buses/traffic and clearways impact the atmosphere (and ability) of the street and pleasantness of outdoor dining. Some of the key ingredients for a successful high street are viewed to be; character/a distinct personality, diversity, attractive to a range of ages, interests and cultures, a variety of shops and uses.

- It was generally agreed that high streets provide for social interaction, building community and social capital, meeting, shopping, convenience, walking, exercise, and act as the heart of a neighbourhood – one of the key contributors to that community's vibrancy.
 - Only 31% of participants supported the concept of bookless libraries with increased access to technology only, while 31% of participants were unsure. Participants were concerned about a loss of social connectivity and community cohesion if we become too dependent on technology in the future. Discussions in Erskineville also highlighted the 'romantic' quality of physical books and an importance in a physical connection.
 - There were a few discussions around what a future library might look like – including different types of spaces for meeting, learning and storytelling. For many people this idea of the future library still include books as a central component of the mix - Green Square Library was cited as an excellent example of the right mix between technology, space and books.
 - The MCA Young Ambassadors were concerned about the idea of bookless libraries as they don't want technology and books to be mutually exclusive. Committee members think there is inherent value in printed books and libraries as social connectors.
- **The ability of the City to balance the needs of late night music and performance venues and local neighbourhoods.** While the majority of participants (76%) agreed that the City could balance these two needs, there was concern that it would require strong management and improved onus of responsibility on new apartment owners (to sound proof their buildings) and the City to manage the behaviour of venues.
- East Sydney had the highest concerns with late night music venues with 32% of participants voting no (out of 28 participants) suggestions included moving activities to the commercial areas of the City such as the CBD and Barangaroo that the concentration of live music venues and associated drinking as an issue.
 - 30% of participants at Redfern voted no, and 30% of participants unsure (out of 13 participants). Of the people who voted no in Redfern it was discussed that it requires regulation and other cities such as London have pubs that shut at 10pm. Of those who voted yes in Redfern, it was acknowledged that while there can be issues with live music venues instead of shutting them down, we should instead focus on services that facilitate people getting home safely, and that it's important for young people and the character and culture of a place to have late night activity.
 - The MCA Young Ambassadors were supportive of having a vibrant night time economy and wanted to see more things to do at night in the City, including live music, festivals, markets, open air cinemas and multisensory accessibility concerts, there was limited awareness of the complexities of balancing the needs of residents and venues.

Scenarios that were concerning:

- **Population growth and capacity for the City to support increased population growth and density.** There was concern that expected population growth will impact on the amenity of the current people who are living here who will suffer because of having to accommodate a lot of extra population growth. In particular, 44% of participants did not think the City had the capacity to support more tourists through increased Air BnBs, and 44% of participants did not support any further expansion of universities into local neighbourhoods. Discussion included:

 - In response to population growth, there was some scepticism about the broader metropolitan planning for Sydney with the view that finance and banking was on the east with logistics in the west, compounding social disadvantage and a desire to move to the east.
 - That the City already takes a big role in population growth, and location of large institutions, and that this growth could be shared in other LGAs. Some participants felt that there are a of suburbs and cities out there that could take up university expansion while others felt that it was good for the economy. There was some scepticism about the broader metropolitan planning for Sydney with the view that finance and banking was on the east with logistics in the west, compounding social disadvantage.
 - While 44% of participants did not think the City had the capacity to support more tourists through increased Air Bnbs, this scenario also attracted the highest proportion of people who said they were unsure or in-between (37%). Discussion points included the desire to maintain and attract tourism while maintaining rental properties for locals, while other people expressed concern for the lack of responsibility and consideration tourists may have when staying in private residential areas.
 - Broad support for the City taking a role in addressing the needs of people impacted by climate change (such as climate refugees) but some felt the City could provide resources rather than housing. Reasons for supporting climate refugees were that the City has adequate resources and employment opportunities to be supportive of these people. Reasons for being undecided or unsupportive were around concerns about overcrowding and strains on infrastructure. Regional centres were cited as a possible solution, however a participant pointed out that we already have internal climate refugees from regional Australia.
- **How new technologies, such as drones, would impact the community.** Only 26% of participants supported drone deliveries in the future, with concerns that they would cause congestion in the sky but also would have impacts on privacy, particularly in high density neighbourhoods. Support of drones however was highest in Redfern with 62% of participants supporting drone delivery (out of 8 participants) and 31% of 16 Strata residents supporting the idea. However despite the higher than average support in the neighbourhood of Redfern and across Strata residents, discussion still raised the dislike of congestion in the sky, with small ground-based drones preferred. The MCA Young Ambassadors felt that drones would create air pollution and a 'cluttered sky' but there could also be a huge issue and there would be security issues with people intercepting packages.

Table 5 Votes for future planning scenarios

SUMMARY	YES		NO		UNSURE		TOTAL
Unexpected climate migration	10	77%	1	8%	2	15%	13
Expected population growth	41	47%	29	33%	18	20%	88
University expansion	40	30%	59	44%	35	26%	134
Co-living housing	117	77%	19	13%	16	11%	152
Collaborative business precincts	54	89%	3	5%	4	7%	61
Car-lite neighbourhoods	86	88%	8	8%	4	4%	98
Electric vehicle charging facilities	93	80%	13	11%	10	9%	116
Public "Urban Cool Rooms"	80	84%	8	8%	7	7%	95
Bookless libraries with access to technology	31	31%	37	37%	31	31%	99
Vertical communities for seniors	84	81%	13	13%	7	7%	104
Urban farms	96	75%	18	14%	14	11%	128
Drone deliveries	31	18%	84	48%	60	34%	175
Shared backyard	68	73%	17	18%	8	9%	93
More tourists	11	19%	25	44%	21	37%	57
"Click and Collect" Grocery pick up points	22	24%	40	43%	31	33%	93
Apartments designed for families and children	54	86%	7	11%	2	3%	63
Open Streets	80	94%	2	2%	3	4%	85
Tiny houses	56	67%	15	18%	13	15%	84
Late night music and performance venues	110	76%	26	18%	8	6%	144
Recreation in the sky	74	86%	8	9%	4	5%	86
Vertical schools with shared facilities	12	92%	1	8%	0	0%	13
Shared communal spaces in apartment buildings	97	88%	7	6%	6	5%	110
Transport oriented development	59	65%	20	22%	12	13%	91
Waste	64	61%	19	18%	22	21%	105
High Street Decline	85	96%	2	2%	2	2%	89

7. MCA Young Ambassadors Workshop

A workshop was held with the Museum of Contemporary Art (MCA) Young Ambassador Committee on 27 March 2019 from 4.30pm to 5.30pm. Around 10 committee members were in attendance.

What makes the City of Sydney special?

Youth committee members highlighted a number of special things about the City of Sydney, including:

- The natural environment, including the harbour, trees, parks and beaches (5 comments)
- A vibrant and interesting creative ecosystem, including art and music, and the galleries and institutions that support this (3 comments)
- Our cultural diversity (3 comments)
- Our functional and beautiful built environment, including the bridge and opera house (2 comments)
- Forward thinking
- Food choices, and
- The opportunities it presents.

What excites you about the future of the City of Sydney?

Youth committee members said they are excited about a range of things in the future, including:

- Technological advances (6 comments)
- Personal development, including owning a house, having a family, growing a career, going travelling, more stability in life (6 comments)
- Increasing accepting and inclusive society (4 comments)
- Renewable energy (3 comments)
- More community involvement and connection (2 comments)
- Seeing how the city evolves and develops into the future (e.g. the three-city model) (2 comments)
- Improved social scene and night life, including pill testing (2 comments)
- Improved public transport throughout the city, and
- More safe and green spaces.

What concerns you about the future of the City of Sydney?

Youth committee members said they are concerned about a range of things in the future, including:

- Climate change and pollution of the natural environment (12 comments)
- Increasing cost of living and housing (8 comments)
- Loss of green space to development (4 comments)
- Transport issues and getting around in the City (e.g. pollution, congestion and price of transport) (3 comments)
- The state of the economy and job availability (2 comments)
- Government and over-policing (2 comments)
- Liveability and increasing urban density (2 comments)
- Accessibility for people with disability, and
- What development in Barangaroo will look like, including corporatisation of the urban environment.

Future neighbourhood scenarios

Youth committee members supported the following future neighbourhood scenarios:

- **Shared communal space in apartment buildings** because this is an efficient use of urban space, it brings communities together, it allows people to share their resources and it is better for the environment.
- **Communal backyards** because this allows people living in apartments to access green space and produce their own food, which may be particularly beneficial for people from lower socioeconomic backgrounds.
- **Urban farms on residential rooftops** because rooftops are wasted space and greenery helps to absorb pollution, cool buildings and beautify the city. It provides opportunities for local food production within the city and gives people access to green space.
- **Co-living housing** because this can bring people together, combat social isolation and increase happiness. It can alleviate pressure on busy people and families by distributing responsibilities for cooking, childcare etc. Committee members think this could also work well for retirement villages.
- **Electric car charging spaces.** While some were unsure about this scenario due to a lack of knowledge about the issue, the majority were supportive because this would incentivise people to invest in electric cars. However, the majority of committee members would like to see more use of public transport in the future.

Youth committee members were unsure about the following future neighbourhood scenarios:

- **Waste collection** because they don't think this will stop people from illegal dumping or change wasteful behaviours by community members or businesses. Committee members think that people who earn more money should have to pay more for their waste and think illegal dumping could be addressed through stricter regulation.
- **Tiny houses** because they think this may be claustrophobic and impact negatively on health and wellbeing, especially for families and those wishing to live and work in the same space. Committee members highlighted the importance of providing a diversity of housing options for people in the community – if people want to live in tiny houses they should be able to.
- **Bookless libraries with tech** because while they like the idea of having access to tech such as 3D printers and virtual reality, they don't want technology and books to be mutually exclusive. Committee members think there is inherent value in printed books and libraries as social connectors.
- **Neighbourhoods without cars** because while the majority of committee members don't see cars playing a dominant role in urban environments into the future, they think cars will continue to be a necessary and convenient option for some including families.
- **University expansion.** While the majority of committee members think that university expansion provides opportunities for the community as a whole through the provision of shared facilities such as libraries and sporting facilities, some highlighted concerns over the increasingly commercialisation of universities, over infringement on local communities. They also emphasized that there should be more focus on the benefits of TAFE, not just university.
- **Late night.** While committee members were supportive of having a vibrant night time economy and wanted to see more things to do at night in the City, including live music, festivals, markets, open air cinemas and multisensory accessibility concerts, there was limited awareness of the complexities of balancing the needs of residents and venues.
- **Public urban cool rooms** because they were concerned that cool rooms would waste water and do not address the underlying issue of climate change. Committee members highlighted a need for the equitable distribution of cool rooms across the city.
- **Drone delivery** because they think regulating air traffic and air pollution would be a huge issue and there would be security issues with people intercepting packages.

8. Strata Residents Workshop

Activity 1: Excited/Concerned

Strata residents were most excited about having a **quality integrated and active transport network** (22%) including carbon free transport, electric cars and even potential of using air space for travel (like the old monorail). People felt positive and excited about 2050 leading to *"amazing solutions"*. Under the theme **better facilities, services and infrastructure** people spoke about how they were looking forward to the city being no longer *"under construction"* and *"seeing the streetscape in ultimo finally looking complete"*. Under the theme **vibrant liveable and creative** theme (14%), people spoke about *"more schools open to weekend marks to bring people together"* and *"community activities within strata"* such as gardening, walking book club and social integration. Being a connected, generous and diverse city (11%) and the use of technology and innovation (8%) were the other top things that strata residents were excited about when thinking about 2050.

Activity 2: Services

- For strata residents 'residential waste collection and recycling received the highest number of votes (13 votes; 25%). Participant's cited reasons behind this as increased waste with increase in population, and a decline in other countries accepting Australian waste. They also discussed the high turnover of tenants in strata units and the associated high levels of waste when furniture etc. gets left behind when it instead can be recycled. Hygiene as also considered to be a significant issue, especially as the city gets hotter by 2050.
- The second most voted for service was 'public safety and local emergency planning' (8 votes; 15%). Discussion around thinking about new ways to manage emergencies – especially if people are living in taller buildings, and the need to ensure that people feel safe walking home through the city, especially if Sydney wants to function as a 24-hour city. Traffic safety was also cited as a significant concern with solutions including one-way streets and traffic lights. While the strata residents also acknowledging that as the city becomes more multicultural there will be a need for more signage in different languages, touch screens in other languages to find out information.
- 'Stormwater and maintenance (4; 7.7%) tied with 'Park and green space maintenance' (4 votes; 7.7%) in third place.

Activity 3: Future neighbourhood scenarios

Strata residents supported the following future neighbourhood scenarios:

- **Co-living housing** because it would suit the needs of students, however some people were opposed saying that while good in principle “not for seniors (us)”
- **Shared communal spaces** because there are increasingly more pets in buildings with a need to take them somewhere outside and close to get out of the apartment. Participants also raised that while this is need, it needs to be planned from the design-phase of a residential building, rather than retro-fitted
- **Car-lite neighbourhoods** because owning or driving a car in the city isn’t necessary
- **Vertical communities for seniors** because older people tend to get pushed out of the city, despite needing hospital services in the inner city, however there are safety concerns around what would happen in emergencies if older people cannot walk down fire stairs. The need to create more housing alternatives for seniors to downsize was also raised, however some participants felt that there was also an opportunity to integrate childcare facilities and support intergenerational interaction and activities.
- **Recreation in the sky** because buildings with trees will help combat heat, however some participants also cited concerns regarding waterproofing costs and the subsequent impact on strata fees. They noted that solar panels on roofs was a potentially better solution.
- **Open streets** because there is the opportunity to activate streets through activities such as markets
- **More development around transport** as long as it doesn’t overshadow open space provision, and as long as there is no overdevelopment. Parking was also raised as a concern in this scenario.
- **Charging for waste** because there is a need to incentivise people to re-use or re-cycle rather than throwing it away

Strata residents were unsure about the following future neighbourhood scenarios:

- **More tourist Airbnb stays** because although it is important for tourists to come to the city and have a place to stay, it was not considered appropriate in strata/residential settings. Some participants were strongly opposed stating “no way”, or “not in our building”.
- **University expansion** because they felt that there were enough inner city and there should be more universities in regional areas
- **Urban farms on rooftops** were considered too problematic, especially to be handled within the framework of strata. Some people stated that they would prefer to have basic needs met like washing lines.

9. Neighbourhood Character Wall

The aim of this activity was to understand what makes the city's local areas unique and special (and the attributes that should be protected in planning for these future places) and the type of place character that people would like to see in those places in the future.

The City of Sydney team defined 10 areas for the purposes of this activity. Each of these areas were set up on an A1 board and placed at an activity station at all of the listening sessions. Participants were incited to individually write their response to the following 4 questions, at any point during the sessions:

- *What is the personality of your local centre?*
- *What is unique about your neighbourhood that you want to preserve?*
- *What makes this area special?*
- *What do you want your local area to be like in 2050?*

The boards were taken to every listening session, which resulted in a cumulative list of responses for each of the local areas. A summary of the responses is provided in the following tables.

9.1. Glebe

What is unique about Glebe that you want to preserve?		Thinking about Glebe in the future... How would you describe its personality?	
Heritage, including built environment and historical significance	14	Quirky and green	6
Quiet streets with little through traffic - a safe place for people to walk and ride	8	Gentle, active, friendly, arty	4
Glebe foreshore	7	Friendly and peaceful	4
Multicultural	6	Heritage and green (forest lodge)	4
Low density - "save the village"	5	Welcoming	3
Live music & restaurants	3	A mixed-use area other than community centre	3
Access to water, good transport, dog off leash areas, parkland	3	Laidback + friendly	3
Eclectic population - not gentrification	3	Family friendly	3
Expression of locals (arts housing policy)	2	Down to earth	1

Love having the YHA		Vegetarian	1
Wood St Park		Uninhibited	1
Youth backpackers		Familiar	
Bidura		No more alcohol late night venues needed so everyone can sleep	
Neighbourhood pubs as local institutions			

What makes this area special?		What do you want this area to be like by 2050	
I like this area becoming a place attracting the people and is safe		Safe	4
In 2050 full of good buildings		Green	4
Bike shop		Trees	4
That most services/facilities/necessary shops are available by walking		Reuse	1
Glebe Youth Centre		Recycle	3
A peaceful promontory		Water	?
Book shops and university students/staff		Community	
Terrace houses		Parks	3
		Services	
		Diversity	3
		Same as it is now	2
		Big library	
		Vibrant Arts	1
		Cleaner	

9.2. Pyrmont

What is unique about Pyrmont that you want to preserve?		Thinking about Pyrmont in the future... How would you describe its personality?	
Maritime history	2	Communal - welcoming	2
Fish markets – don't gentrify too much	2	Airy, spacious, freedom	2
Low rise buildings	2	Good open air walks	1
Walks around water	2	Not feel like in the heart of the city of high rise	1
Access to water + sunlight + low rise	2		
Star casino	1		
History wharves and piers	1		
Families			
Sunlight			

What makes this area special?		What do you want this area to be like by 2050	
Residential community		Safe	2
Trees		Less cars/ more green areas	
Heritage, including built environment and historical significance of Sydney	3	Connected bike paths	
Waterfront		Rainbow crossing	
Village atmosphere		Healthy	
Community space internal and external		Community based	
Walkable		Open to all	
Designed from scratch (Jackson's Landing)		No more condensed than now	

9.3. Ultimo and Chippendale

What is unique about Ultimo and Chippendale that you want to preserve?		Thinking about Ultimo and Chippendale in the future... How would you describe its personality?	
Village feel with parks, friendly neighbours and cafes etc	3	Diverse – students, artists, families, young people and ... hopefully more seniors too. It's currently a young demographic.	4
The warehouses in Ultimo/broadway are like New York	3	Village feel	3
Mixed use area	3	Friendly	2
The concentration of small art galleries dotted around	2	Creative	1
Proximity to 3 universities & TAFE – great education opportunities	2	Vibrant	1
Street art	2	Streets for walking	1
Maintaining small parks and local amenities including our community centre and pubs	2	Unique feel	
Varied architecture (Victorian terraces and cubic form)	2	Eclectic, mixed, diverse	
Chippendale – diverse neighbourhood			
Heritage precinct – east side Chippendale			

What makes this area special?	What do you want this area to be like by 2050		
Improve the condition of table tennis area. Is it possible to put some tables down stairs, so people can play inside? Outside area the conditions too basic.		Safe	1
Having mass, Ian Thorpe, Aquatic Centre, Wentworth Park and Darling Harbour etc.		Convenience	
Chinese residential next to Chinatown		Clean	1
Beams festival		No pollution	

Good CBD transport network connecting to other parts of the city		Vibrant	4
Not much		Greener	
		Cheaper	
		Less development	
		CCTV	
		Train line	
		Library	
		Less ugly	
		Residential	
		Community	
		Trees	
		Heritage Properties	

9.4. Erskineville, St Peters and Alexandria

What is unique about Erskineville, St Peters and Alexandria that you want to preserve?		Thinking about Erskineville, St Peters and Alexandria in the future... How would you describe its personality?	
Village feel with bars, cafes, food nooks choices	6	Small business hubs	2
Sydney Park	5	Urban renewal / reimagining spaces	2
Quiet streets	4	Pedestrian & public transport friendly	2
Leafy	3	Dynamic	1
Australian technology park	3	Entrepreneur	1
Bar, café, food choice	2	Magnetic cars	
Diversity of density, age of buildings, populations, lots of industry	2	More play activation	
Heritage buildings e.g. Alexandria brickworks	2	Inclusive	
Low rise	2	Compact	
Mix of commercial (in light industry) + Residential (medium density) + Recreation (day and night) creates an interesting friction	1		
Connected	1		
Actual houses			
Friendly vendors			

What makes this area special?		What do you want this area to be like by 2050	
Bunnings		Safe	3
Sydney Park	1	Less people	1
Lots of dog parks		More public transport	2
Village vibe	2	Happier	1
No more shops than present!		More equal	
Cycle hub		No adult cycle riders on footpaths!	
Close to everything		Cleaner	
Great café choices		Affordable	1
Inclusive and diverse		Diverse	
Great train access	2	More cycling/cycle ways	2
No "unsafe separated cycle ways" that cause serious injury		Library	
Great buses		Less industrial looking	
Can walk everywhere	2	Greener	3
Plenty of trees	2	Less traffic	2
I know my neighbours		Less cars	
Green + wildlife		Fix Pinkstone Playground	
Well balanced density		Good amenity	
Good amenity		Diverse entertainment/food	
Build a pedestrian link (footbridge/tunnel) across Princes Highway to St Peters station for safety			
It is safe because we can look after each other			
PACT centre for emerging artists			
Congestion in hundreds of apartments is an issue			

9.5. Newtown & Darlington

What is unique about Newtown & Darlington that you want to preserve?		Thinking about Newtown & Darlington in the future... How would you describe its personality?	
The delightful mix of weird and wonderful residents	8	In your face	6
Cafes and bars need to spill out into squares and public spaces	6	A thriving high street supported by its community	5
Stop Uni of Syd building - ugly boxes (esp. student residences). Awful! Thomas More is ugly too. How did it get approved?	5	Yes, love the diverse shopping	4
A thriving nightlife	4	Less cars more bikes	4
Cafes on footpath often block pedestrian traffic		Hip, connected, walkable	
		Friendly and totally accepting of everyone.	
		Relaxed, safe, friendly	
		Diversity and acceptance	
		Supports and celebrates the arts	
		Green organic goof	
		Community gardens as public spaces	
		Supportive to homeless people	
		Independent and liberal (not in the political sense)	

What makes this area special?		What do you want this area to be like by 2050	
Gay Sydney Uni students		Safe	3
Swimming pool		Greener	4
Vibrant King St	2	Less traffic	5
No McDonalds		More affordable house prices	3
Trendy and accepting		Sustainable	
Multicultural		Less pollution/noise	1
Student and young people		24/7 public transport	1
Festivals		Not gentrified	
RPA Hospital for cycleway crash victims			
Creativity and diversity/smiling faces	2		
Sadly we have a lot of Koori's begging - how can the council better support them?			
Newtown neighbourhood centre			
Art and music	3		
Independent businesses encourage work			
Dendy			
Can walk to lots of culture			

9.6. Green Square, Rosebery, Beaconsfield and Zetland

What is unique about Green Square, Rosebery, Beaconsfield and Zetland that you want to preserve?		Thinking about Green Square, Rosebery, Beaconsfield and Zetland in the future... How would you describe its personality?	
Mixed use - industry, commercial, residential	3	Overcrowded - need more transport	8
Green Square Library	3	To develop a unique personality "some grit"	1
Diverse population	1	Diversity - spaces and people	1
Historical character	1	Friendly and community oriented	1
The ability to have historical based housing mixed with more dense uses	1	Evolving - finding itself	
Chance to walk, public transport everywhere	1	Lively, energised, active	
Trees of Joynton Avenue - don't cut any more down	1		
Walkable scale	1		
Combination of live, work, social, recreational			

What makes this area special?		What do you want this area to be like by 2050	
Community centre e.g. indoor ping pong as table tennis centre as well		A community centre by 2015	1
Green environment - many many trees in Green Square, Rosebery, Beaconsfield and Zetland		Safe	1
Having electrical power stations for electrical car - fill battery		More public transport	5
Free of the scourge of the light rail		More parking	1
The Cannery		More light and better lighting in Joynton Park	2
Young families and diversity		Do something about Botany Rd	1
Green Square library		Open hour library	
Dog ownership (responsible) → fosters community		More shopping centre, groceries and restaurants	
		Clean (no littering)	
		Post office	

9.7. Potts Point, Woolloomooloo, Darlinghurst & Kings Cross

What is unique about Potts point, Woolloomooloo & Darlinghurst that you want to preserve?		Thinking about Potts point, Woolloomooloo & Darlinghurst in the future... How would you describe its personality?	
Long Torres Strait Islander Aboriginal history	2	A village with an engaged community	3
Affordable housing	2	United, engaged, contributing, happy, natural gardens, herbs, natural permaculture and flowers, joyful, colourful, naturally awake	3
Social housing	2	Developers should be kept under control	3
Historical well-constructed buildings	2	Family friendly	2
Scale of building historic houses park maintenance	2	Friendly	2

Injecting room - turned out to be a very good idea, no syringes on my doorstep any more	2	Alive	2
Need "better" nightlife	1	Fun	2
Close community + diverse	1	Heritage	1
The vibe man	1	More public housing / low cost housing across Sydney, too many homeless on the streets - what do international visitors think?	1
Bohemian	1	Dense and green	1
It's pretty and casual while super accommodating		Diverse	
Unaffordable		Creative + bohemian + hedonistic heart of Sydney	
Lots of NGO support		Kids can play in the street unsupervised	
High proportion low income			
Trees destroying rate payers properties / Rubbish, rats and ibis birds / no street names / Poorly maintained public housing			

What makes this area special?		What do you want this area to be like by 2050	
Used to be nightlife		Safe	7
Navy base		Greener	10
Hyde Park		Less traffic	5
Music history		Less development	5
LGBTIQ history and future		Cleaner and rubbish free	3
Diverse/ social diversity	2	Re-opened	8
Interesting		Connected bike paths	5
History		Save heritage listed buildings	10
Location Location Location	3	Prosecute loud buskers	1

Young families		Less noise	1
Terraces		Inclusive	5
Eclectic people		Affordable	4
Vibrant		Pleasant	2
Lots of trees and garden beds	4	Ferry to Woolloomooloo	8
Great restaurants, cafes, small bars		Keep residential amenity	
Waterview's		More family friendly	2
Great green, open spaces		Diverse	2
Great architecture		Not a retirement village	
		Vibrant	5
		Bring back the nightlife	6
		Control backpackers	3
		More parking	
		Better transport/ less cars, more trams	3
		Activated and exciting	
		More leisure/activities	
		Ferry from Woolloomooloo to Manly, and Taronga Zoo and towards Parramatta	

9.8. CBD North & South

What is unique about CBD North & South that you want to preserve?		Thinking about CBD North & South in the future... How would you describe its personality?	
Beautiful heritage buildings	5	Vibrant night life / night time economy	10
Ability to live without a car	5	Cafes to stay open later than 3pm!!	4
It is still a "settlement" - not a Hong Kong	1	Allow people to live in the city without the bass from 24hr disco keeping you awake with boom and vibrations!!!	3
Low rise buildings near parks	1	Priority to pedestrians . keep to the left on pavements	3
Preservation of a village atmosphere		Families, sunlight, water access	2
Hustle and bustle - busiest locale in Australia		I'd like it to be diverse	1
Don't want to preserve - boring, dull, grey pacing - check out Barcelona!)		Bicycle lanes	1
It's beauty, clean, green - the smartest, best city in Australia!		I'd like it to be diverse	1
Tourist friendly - a city to enjoy		A vibrant space for people (without risk of drunken violence	1
We need to keep our city green and clean		Great events and cultural activities / free activities (concerts, movies etc)	
		Affordable housing	
		More life on weekends	
		Green, breezy	

What makes this area special?		What do you want this area to be like by 2050	
Urban Buzz – 24hr?		Safe	4
Public transport to go anywhere	2	Less cars	5
Work place		No cars except deliveries	2
Light Rail		More cycle ways and bicycle lanes	6
Places to go out e.g. Basement (revived!)		Less busy	1
Multiple options on my doorstep		Disabled (accessibility)	1
Access to the arts quay gardens		More green space	3
Vibrant nightlife to compete with Melbourne CBD		Ferry at Woolloomooloo	2
		More busy	1
		Vibrant nightlife	3
		More pedestrian areas	
		Diverse architecture	
		Cleaner	
		Town Hall Square	

9.9. Surry Hills and Paddington

What is unique about Surry Hills and Paddington that you want to preserve?		Thinking about Surry Hills and Paddington in the future... How would you describe its personality?	
Village atmosphere	5	Green	4
Beautiful Victorian Terraces	4	Politically active	3
Trees, raingardens, pocket parks	4	Friendly	2
Proximity to entertainment (pubs, theatre)	4	Mixed use (industry, commercial, residential)	1
Small streets	3	Multicultural	1
Very walkable	2	Vibrant	1
Community gardens & verges	2	The ultimate urban village	1
Human scale	1	Active street landscapes	
Diversity	1	Bold	
Affordable housing	1	Aware	
Diversity of people and business	1	Diverse	
Beautiful library that is also central		Affordable housing	
		Mixed use	
		Frisky	

What makes this area special?		What do you want this area to be like by 2050	
Fashion designers		Safe and safe places	2
Old pubs		More amenities e.g. libraries, extended library hours, more activities at the library	2
Architectural heritage and history/ Indigenous history	2	Less congestion	1
Terrace houses		More public artworks	1
Keep green spaces and large trees		Better Oxford St	

It is where I live and it is dog friendly		Car free pedestrian/ bike streets	
		Keep the old houses/ too many apartments is a problem	
		More trees and benches	
		More presentable Cleveland St	

9.10. Redfern and Waterloo

What is unique about Redfern and Waterloo that you want to preserve?		Thinking about Redfern and Waterloo in the future... How would you describe its personality?	
Low rise structures with community feel	5	Community feel needs to be maintained !!!	3
Aboriginal community	5	Community activities	2
Remaining heritage buildings	4	Keep low rise open space	2
Socioeconomic, cultural, ethnic diversity	4	Dog-friendly	1
Still has some small local shops	3	A socially acceptable "social mix"	1
Trees	3	A cross-class blend of social and private	1
The open accessible green space	1	Green (without crime)	1
Opportunities to meet local neighbours	1	Keep space between high rise + set backs for more green space	
Our Lady of Mount Carmel School + Church community	1	Active - healthy	
Car sharing availability	1	A unique and historical village	
Opportunities to meet local neighbours	1	Threatened by Sydney University	
Places where people from diverse backgrounds can meet e.g. 107 projects	1	One of the most walkable suburbs in the world!!!	
Welcoming businesses that offer something different (The Dock)	1	Quirky restaurants, bars, cafes	
Long term residential community strength + support for each other		The centre of Aboriginal Australia	

		Stroller/wheelchair friendly at traffic lights / pedestrian crossings - Not on diagonal as are now.	
--	--	---	--

What makes this area special?		What do you want this area to be like by 2050	
It's a vibrant community		Safe	
Aboriginal central	2	Affordable housing	5
Bike track		Lived in	
Abundance of specialist services for Aboriginal people	2	Gardens and trees, Redfern Park	2
Established supported communities within social housing blocks		Compost bins for all households	1
Nice		Less racism	3
Disability support		Green, diverse and vibrant	3
Services for cycle crash victims		More public transport	3
More gardens and trees		CCTV	
Bike lanes are beautiful		Injection room	
Friendly and welcoming	2	Trendy but still Indigenous	2
People look out for each other		Height restrictions on buildings	
		Consideration for older pedestrians by cyclists on footpaths and cycleways	
		Stop dumping rubbish	
		Stop Airbnb	
		Do not cut trees for widening road on Lachlan St	
		More restaurants, build another 'The Cannery' in Waterloo	
		We need another light rail station	